

# infinity motion IP54

Wireless Outdoor Sensor for ESL & ESX  
Wide Angle Dual Tech Microwave/PIR

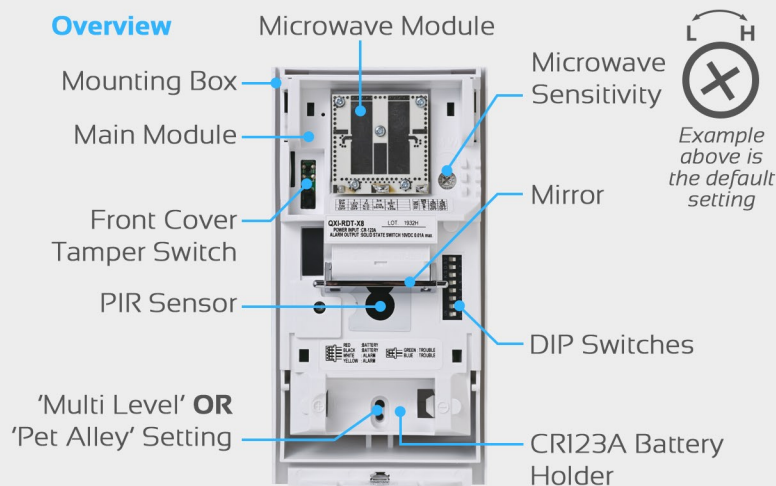
infinity series  
powered by EliteControl



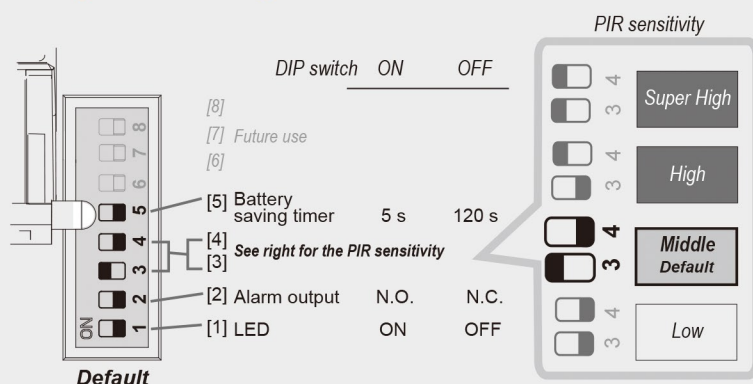
## Specifications

Detection Method	Passive Infrared & Microwave
Coverage	12m x 12m @ 120°
Wireless Range	Up to 500m Line of Sight
Wireless Frequency	915MHz
Microwave Frequency	10.525GHz
Mounting Height	2.2 to 2.7m (Multi Level) <b>OR</b> 0.8 to 1.2m (Pet Alley)
Detection Zones	18 Zones or 40 Zones
Sensitivity	2.0°C @ 0.6m / sec
Detectable Speed	0.3m - 2.0m / sec
LED Indicator	Warm-up, Alarm, Walk Test
Tamper Switch	Wall & Front Cover
Battery Type	1 x CR123A Lithium
Battery Life	Up to 3 Years
Operating Temperature	-40°C to 45°C
Environment Humidity	95% max
Pet Alley (optional)	Removes lower area detection to avoid small animals.

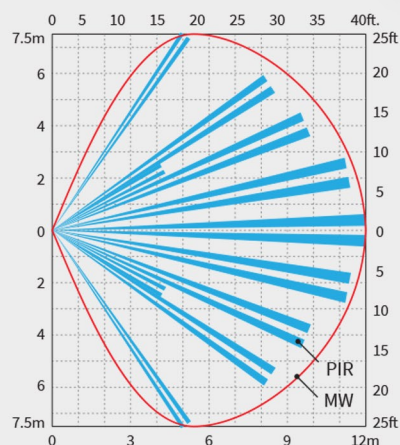
## Overview



## Dipswitch Settings

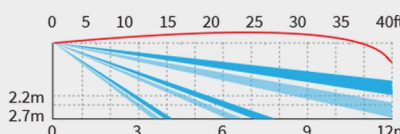


## Detection Area



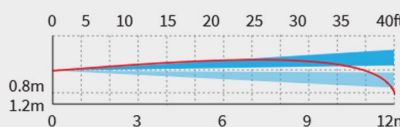
Top View

**Multi Level**  
(default setting)



Side View

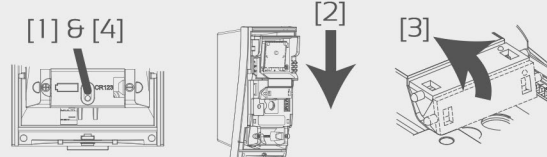
**Multi Level**  
(default setting)



**Pet Alley**  
(see below for more information)

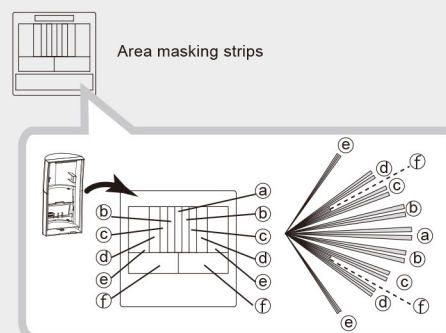
## Pet Alley Configuration

- [1] Loosen fixing screw
- [2] Slide main unit down
- [3] Rise mirror up to the fixing position
- [4] Re-tighten fixing screw



## Masking

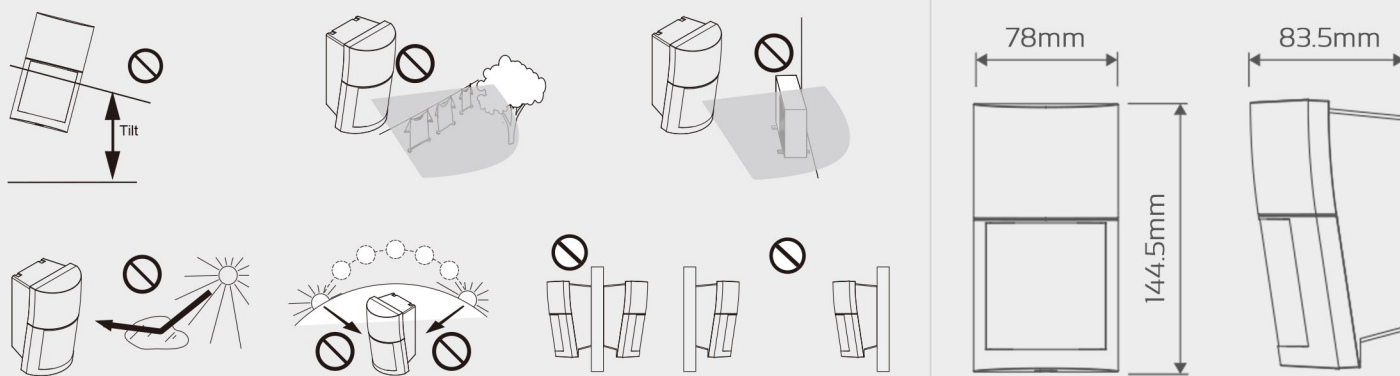
Masking can be achieved using the adhesive strips provided as detailed below:



## Installation Areas to Avoid

The nix sign  indicates prohibition

## Dimensions



**Learning Procedure** *(make sure you are in installer programming before proceeding. Default P000000E)*

### Enable Wireless Input (P122E)

Press PROG 122 ENTER then the input number you wish to make wireless, followed by ENTER. Next make sure options 1 & 5 are on. This makes the input active & wireless, then press ENTER to save

Example:

P 122 E 9 E turn 1 & 5 on E

Option 1 = Input is active   Option 5 = Input is wireless  
Input you are working on  
Programming Address

**Learn Device into an Input (P164E)** *(ensure battery is correctly installed in the device before proceeding)*

- Press PROG 164 ENTER then the input number you wish to enrol the device into, followed by ENTER
- Press ENTER again to start the learn beeps, indicating that the system is waiting to learn a device
- Activate the device tamper switch to complete the learn process and the keypad should stop beeping

The keypad will now display the input number you learnt the device into. Repeat the steps above using another spare input to learn another device or exit programming to test.

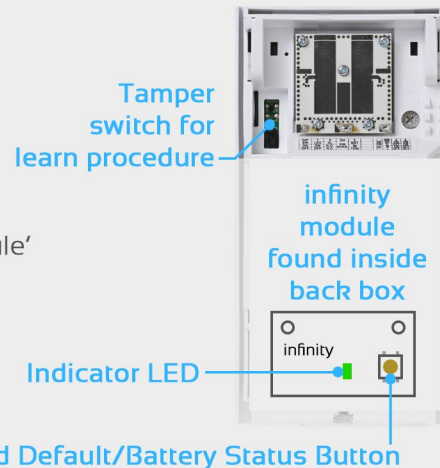
- Note: Dipswitch 5 should be ON for testing purposes. This means the sensor will only sleep for 5 seconds after sensing any movement & then can be triggered again. After testing, it is recommended to turn dipswitch 5 OFF to extend the life of the battery.

### Battery Status Indication

With the battery inserted, press the gold button on the 'black infinity module' for less than 1 second & the LED will indicate battery status.

**Green = Battery OK   Red = Battery Low & replacement is advised**

Battery low will be indicated at 2.3V & under



### Default Programming

If the 'infinity motion IP54' has previously been learnt into a system it may require defaulting. To do so, press and hold the gold button on the 'black infinity module' while inserting the battery & continue to hold. The indicator LED will display **solid red** and **turn green** when default is successful.

*Note: If system defaults have changed you may need to reference the control panel manual for more information*